

Quiz on 4.1 - 4.3

4.1 classify triangle

By Angles
 $3 \cong \angle s$ equilateral
 3 acute $\angle s$ acute
 1 obtuse \angle obtuse
 1 right \angle right

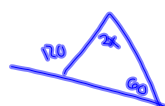
By Sides
 $3 \cong$ sides equilateral
 $2 \cong$ sides isosceles
 $0 \cong$ sides scalene

4.2

4.2 degrees are in a triangle

$$= 180$$

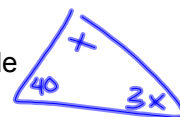
exterior angle of a triangle



$$120 = 2x + 60$$

$$60 = 2x$$

$$30 = x$$



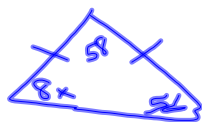
$$3x + x + 40 = 180$$

$$4x + 40 = 180$$

$$4x = 140$$

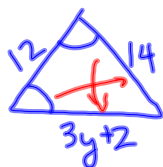
$$x = 35$$

4.3 Isosceles and equilateral triangles



$$8x = 58$$

$$x = 7$$



$$3y + 2 = 14$$

$$3y = 12$$

$$y = 4$$